



# ELS OFFICIAL PRICE LIST 2025

INFORMATION CORRECT AT TIME OF PUBLICATION  
AND SUBJECT TO CHANGE WITHOUT NOTICE.

CURRENT AS OF AUGUST 29, 2024

# ELS LANGUAGE CENTERS

## 2025 PRICES, DATES & TERMS AND CONDITIONS

WHY CHOOSE ELS	3
OUR CAMPUSES ON THE MAP	4
TUITION & GENERAL FEES	5
UNIVERSITY ADMISSIONS SERVICE	6
EXECUTIVE ENGLISH PROGRAMS	7
ILSC HELLO ONLINE ENGLISH	8
HOUSING & AIRPORT TRANSFER FEES	9
START DATES	11
AGE REQUIREMENTS	13
PAYMENT PLAN	14
TERMS AND CONDITIONS	15

### ★ ABOUT OUR TUITION PRICES AND FEES

Tuition prices and most fees are the same for each center.

Housing and airport pick-up prices will vary by study destination.

Access the digital brochure [here](#).



# OVER 1.2 MILLION STUDENTS HAVE CHOSEN ELS...

## HERE'S WHY!



### ACADEMIC EXCELLENCE

- The most effective way to prepare for career and academic success.
- Over 600 university and college partners across the USA accept ELS level 109 or 112 as proof of English language proficiency.
- A teaching methodology that works – over 40,000 students have matriculated to university.
- More than 1.2 million students from over 140 countries have learned English with ELS.



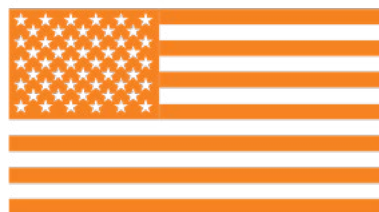
### AMAZING US DESTINATIONS

- 11 unique locations across the USA.
- University campus-based schools.
- Experience the diverse landscapes and cultures that America has to offer.



### SUPPORTIVE AND SAFE

- Academic advice and assistance in applying to university.
- Teaching staff that support you every step of the way.
- Safe, supportive learning environments.



### AMERICAN CULTURAL EXPERIENCE

- Full English language immersion from day one.
- Discover an American University experience at our campus-based centers.

# AMAZING AMERICAN DESTINATIONS

CHOOSE FROM 11  
ON-CAMPUS LOCATIONS



## ELS CHICAGO

on the campus of Dominican University

## ELS CINCINNATI

on the campus of University of Cincinnati

## ELS CLEVELAND

on the campus of Case Western Reserve University

## ELS HOUSTON

affiliated with University of St. Thomas - Houston

## ELS LOS ANGELES COUNTY

on the campus of University of La Verne

## ELS MELBOURNE

on the campus of Florida Institute of Technology

## ELS NASHVILLE

on the campus of Middle Tennessee State University

## ELS PHILADELPHIA

on the campus of St. Joseph University

## ELS SAN FRANCISCO, NORTH BAY

on the campus of Dominican University of California

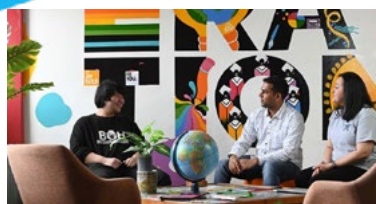
## ELS ST. PAUL

on the campus of University of St. Thomas - Minnesota

## ELS ST. PETERSBURG

on the campus of Eckerd College

# 2025 TUITION FEES



## VALIDITY PERIODS:

Tuition and general fees valid for all new applications received after January 1, 2025.

All fees are in American Dollars (USD). The availability of programs is subject to student enrollment.

## GENERAL FEES

<b>Application Fee</b> ( <i>Applies to all programs, one-time, non refundable</i> )	<b>\$200.00</b>
<b>Materials &amp; Technology Fee</b> ( <i>per week</i> )	<b>\$27.50</b>
<b>Student Health Insurance</b> ( <i>per week</i> )	<b>\$50.00</b>
<b>Facility Fee</b> ( <i>per week</i> )	<b>\$20.00</b>



## TUITION FEES PER WEEK

	1-11 Weeks	12-23 Weeks	24+ Weeks
<b>Intensive English</b> (30 lessons per week)	<b>\$560</b>	<b>\$525</b>	<b>\$495</b>
<b>Semi-Intensive English</b> (20 lessons per week)	<b>\$465</b>	<b>\$440</b>	<b>\$415</b>
<b>American Explorer</b> (15 lessons per week)	<b>\$420</b>	<b>\$395</b>	<b>—</b>

Students who will apply for a student visa must register for an I-20-eligible program (Intensive English or Semi-Intensive English for a minimum of 4 weeks.

The American Explorer program is available for registrations up to a maximum of 12 weeks - this program is not I-20 eligible.

## \* ALSO AVAILABLE AT ALL CENTERS

- University Admissions Service: (Conditional & Direct Admissions)
- Super Intensive English
- English for Executives



## TUITION FEES

(multiweek package fees)

	4 Weeks	8 Weeks	12 weeks	16 weeks	20 weeks	24 weeks	28 weeks	32 weeks	36 weeks	40 weeks	44 weeks	48 weeks
<b>Intensive English</b> (30 lessons per week)	\$2,240	\$4,480	\$6,300	\$8,400	\$10,500	\$11,880	\$13,860	\$15,840	\$17,820	\$19,800	\$21,780	\$23,760
<b>Semi-Intensive English</b> (20 lessons per week)	\$1,860	\$3,720	\$5,280	\$7,040	\$8,800	\$9,960	\$11,620	\$13,280	\$14,940	\$16,660	\$18,260	\$19,920
<b>American Explorer</b> (15 lessons per week)	\$1,680	\$3,360	\$4,740	—	—	—	—	—	—	—	—	—



# UNIVERSITY ADMISSION SERVICE

available **PRE-ARRIVAL & AT ALL ELS CENTERS**



## WHY CHOOSE OUR UNIVERSITY ADMISSIONS SERVICE

- Secure your conditional or direct admission to one of ELS's 40+ priority higher education partners throughout the USA before you arrive.
- Get support selecting the right university, applying for admission, and transitioning to an American university.
- Ease your way into the American higher education experience by learning English at our university campus-based centers where you can take advantage of campus facilities while enjoying small classes and personalized attention.

## VALIDITY PERIODS FOR SERVICE FEES:

- University Admission Service fees are valid for all new applications received after January 1, 2025.



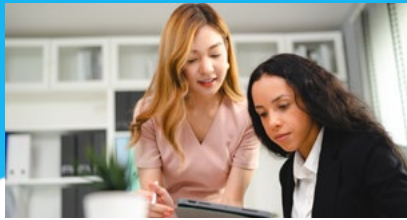
## UNIVERSITY ADMISSION SERVICE FEES

<b>CONDITIONAL OR DIRECT ADMISSION* APPLICATION TO AN ELS HOST INSTITUTION</b> (Applies to higher education partners that are directly affiliated with ELS Centers, or that host our centers on their campus)	<b>NO FEE</b>
<b>CONDITIONAL OR DIRECT ADMISSION* APPLICATION TO OTHER ELS PARTNER UNIVERSITIES</b> (Applies to ELS partner universities that are <b>not</b> host institution partners.)	<b>\$180</b>
<b>CONDITIONAL OR DIRECT ADMISSION* APPLICATION TO OTHER ELS COMMUNITY COLLEGE PARTNERS</b> (Applies to ELS partner community colleges that are <b>not</b> host institution partners.)	<b>\$75</b>
<b>APPLICATION CHANGES</b> (Applies to deferrals, changes from conditional to direct admission, etc.)	<b>\$75</b>

*\*Direct admission applications require at least one session (4 weeks) of ELS Intensive English study to ease the way into the American higher education experience. This step is optional for students who plan to attend select participating Direct Admission partner(s) - ask us for details.*

# EXECUTIVE ENGLISH PROGRAMS

customized learning available at **ALL ELS CENTERS**




## WHY CHOOSE OUR EXECUTIVE ENGLISH PROGRAMS

- Two programs to choose from, both tailored to your unique business communication needs. Complete a needs survey and an informal interview with our staff so that we can fully understand what you want to achieve and create your tailored learning plan.
- The Super Intensive English program offers private classes with personalized curriculum customized to your individual needs and goals.
- The English for Executives program combines morning group classes designed to build comprehensive Business English skills with private lessons in the afternoon, tailored to your specific learning needs, available for both individuals or for teams.

## VALIDITY PERIODS FOR TUITION FEES:

- Tuition and general fees are valid for all new applications received after January 1, 2025.

## SUPER INTENSIVE ENGLISH PROGRAM


 TUITION FEES PACKAGE PRICE*	1-week Package	2-week Package	3-week Package	4-week Package
15 Lessons Per week	<b>\$1,595</b> (\$200 tuition deposit)**	<b>\$2,900</b> (\$300 tuition deposit)**	<b>\$4,215</b> (\$400 tuition deposit)**	<b>\$5,535</b> (\$600 tuition deposit)**
20 Lessons Per week	<b>\$1,790</b> (\$200 tuition deposit)**	<b>\$3,540</b> (\$300 tuition deposit)**	<b>\$5,265</b> (\$400 tuition deposit)**	<b>\$6,930</b> (\$600 tuition deposit)**
30 Lessons Per week	<b>\$2,680</b> (\$200 tuition deposit)**	<b>\$4,505</b> (\$400 tuition deposit)**	<b>\$6,580</b> (\$600 tuition deposit)**	<b>\$8,650</b> (\$800 tuition deposit)**

Students who will apply for a student visa must register for an I-20-eligible program (20 lessons per week or more, for a minimum of 4 weeks).

\* Package includes round trip airport pickup service, medical insurance, tuition, and materials. Note that housing and meals are not included.

\*\*Tuition deposits are due at the time of registration and are applied towards the package cost. The remaining balance (package fee, less the tuition deposit) is due prior to starting.

## ENGLISH FOR EXECUTIVES PROGRAM

 TUITION FEES PACKAGE PRICE*	2-week Package	4-week Package	8-week Package
English for Executives	<b>\$3,270</b> (\$200 tuition deposit)**	<b>\$6,370</b> (\$200 tuition deposit)**	<b>\$12,300</b> (\$200 tuition deposit)**

Students who will apply for a student visa must register for an I-20-eligible program (minimum 4-week package).

\* Package includes round trip airport pickup service, medical insurance, tuition, and materials. Note that housing and meals are not included.

\*\*Tuition deposits are due at the time of registration and are applied towards the package cost. The remaining balance (package fee, less the tuition deposit) is due prior to starting.

## 2025 PROGRAM START DATES

**Super Intensive English** starts any Monday, year-round.\*

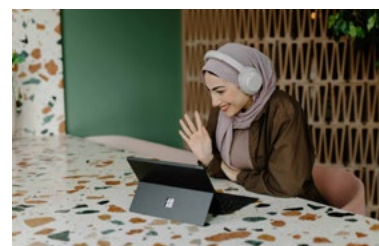
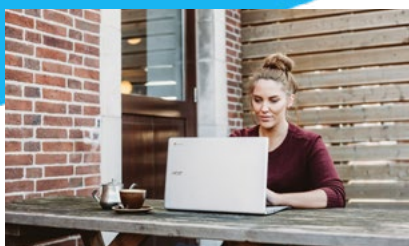
**English for Executives** starts on session start dates.

\*For the best experience we encourage students to start at the beginning of a session where possible and not to start on week four of the session.

# ILSC HELLO

## ONLINE ENGLISH THROUGH ILSC LANGUAGE SCHOOLS

join from  
anywhere



**Hello**  
Higher Education &  
Language Learning Online

### WHAT IS ILSC HELLO?

ILSC HELLO Online English is offered through our partner school, ILSC. Students completing a level in ILSC HELLO may transfer to an in-person program at an ELS center. Learn about ILSC and ELS level equivalencies and explore your program options and schedules:

[www.ilsc.com/language-schools/programs/online-english](http://www.ilsc.com/language-schools/programs/online-english)

### WHY CHOOSE ILSC HELLO ONLINE ENGLISH?

- Learn English online from anywhere in the world through our partner school, ILSC Language Schools.
- Choose from three online English schedule options - study between 10-20 hours per week.
- Different program options include: General English, English for Academic Purposes, University Pathway, or Greystone College Pathway
- Programs offered twice per day - choose the time that fits your time zone and life.
- Live virtual instruction from teachers with years of English teaching experience.
- Progress one level in as little as 4 weeks of online English study.
- Start online with ILSC HELLO, then transition to an ELS campus in the USA.

### FEES ARE VALID FOR REGISTRATIONS RECEIVED BETWEEN JAN 1 - DEC 31, 2025

#### GENERAL FEES - PRICES FOR ILSC HELLO ARE IN CAD

<b>Registration Fee</b> (Applies to all programs, one-time, non refundable)	<b>\$120 CAD</b>
<b>Materials Fee</b> (per week)	<b>\$10 CAD</b>

#### TUITION FEES PER WEEK

<b>Elective Online</b> (5 hours per week)	<b>\$85 CAD</b>
<b>Semi-Intensive Online</b> (15 hours per week)	<b>\$110 CAD</b>
<b>Intensive Online</b> (20 hours per week)	<b>\$140 CAD</b>

### 2025 SESSION START DATES

January 2, January 29, February 26, March 25, April 22, May 20, June 17, July 15, August 12, September 9, October 7, November 4, December 2

All programs run in 4-week sessions.

Students who choose to take the University Pathway Online or Greystone College Pathway Online programs must begin on session start dates.

Students who choose to take General English Online or English for Academic Purposes Online can start on any Monday year-round (Tuesday if Monday is a public holiday); however, for the best experience we encourage students to start at the beginning of a session where possible and not to start on week four of the session.





# 2025 HOUSING FEES



## VALIDITY PERIODS:

Homestay fees are valid for applications received after Oct 1, 2024 for arrivals in 2025, but are subject to change at any time. On and off campus student residence fees are valid for applications received after Oct 1, 2024 for arrivals in 2025, but are subject to change at any time.

## 🏠 BOOKING FEES

<b>Housing Booking Fee</b> (one time fee - only applicable to bookings less than 4 weeks)	<b>\$200</b>
<b>Unaccompanied Minor Homestay Booking Fee</b> (one time fee - not applicable for minors accompanied by a parent, legal guardian or chaperone)	<b>\$280</b>

ELS may use carefully selected partners to house students with suitable Homestay providers. Housing availability and confirmations are contingent on university and/or provider approval and are subject to change.

## 🏠 HOUSING WEEKLY FEES & AIRPORT PICKUP FEES

ELS CHICAGO		
<b>Homestay</b> <b>\$415 per week</b> 14 meals per week (breakfast and dinner)	<b>Chicago Student Residence (off campus)</b> <b>\$400 per week</b> Double occupancy Minimum booking, 4 weeks	<b>Airport Pickup Fee (Optional)</b> <b>\$185 (One Way)</b> ORD - Chicago O'Hare International Airport
ELS CINCINNATI		
<b>Homestay</b> <b>\$370 (per week)</b> 14 meals per week (breakfast and dinner)	<b>UC Campus Residence (on campus)</b> <b>\$405 (per week)</b> Double occupancy	<b>Airport Pickup Fee (Optional)</b> <b>\$175 (One Way)</b> CVG - Cincinnati/Northern Kentucky International Airport
ELS CLEVELAND		
	<b>Cleveland Student Residence (off campus)</b> <b>\$325 (per week)</b> Single occupancy	<b>Airport Pickup Fee (Optional)</b> <b>\$190 (One Way)</b> CLE - Cleveland Hopkins International Airport
ELS HOUSTON		
<b>Homestay</b> <b>\$405 (per week)</b> 14 meals per week (breakfast and dinner)	<b>Houston Student Residence (off campus)</b> <b>\$300 (per week)</b> Double occupancy Minimum booking, 4 weeks	<b>Airport Pickup Fee (Optional)</b> <b>\$190 (One Way)</b> HOU - William P. Hobby Airport OR IAH - George Bush Intercontinental Airport

# 2025 HOUSING FEES

## HOUSING & AIRPORT PICKUP FEES

### ELS LOS ANGELES COUNTY

<b>Homestay</b> <b>\$395</b> (per week) 14 meals per week (breakfast and dinner)	<b>ULV Campus Residences</b> (on campus) <b>\$475</b> (per week) Double occupancy. 8 meals per week (1 meal per day - breakfast, lunch, OR dinner)	<b>Airport Pickup Fee</b> (Optional) <b>\$475</b> (One Way) LAX - Los Angeles International Airport
--	---	---

### ELS MELBOURNE

<b>Homestay</b> <b>\$375</b> (per week) 14 meals per week (breakfast and dinner)	<b>FIT Campus Residences</b> (on campus) <b>\$425</b> (per week) Double occupancy. 19 meals per week (full board on weekdays and half board on weekends)	<b>Airport Pickup Fee</b> (Optional) <b>\$245</b> (One Way) MCO - Orlando International Airport
--	---	---

### ELS NASHVILLE

	<b>Nashville Student Residence</b> (off campus) <b>\$315</b> (per week) Single occupancy	<b>Airport Pickup Fee</b> (Optional) <b>\$180</b> (One Way) BNA - Nashville International Airport
--	--	---

### ELS PHILADELPHIA

	<b>Living &amp; Learning Commons</b> (on campus) <b>\$400</b> (per week) Double occupancy	<b>Airport Pickup Fee</b> (Optional) <b>\$190</b> (One Way) PHL - Philadelphia International Airport
--	---	--

### ELS SAN FRANCISCO, NORTH BAY

<b>Homestay</b> <b>\$440</b> (per week) 14 meals per week (breakfast and dinner)	<b>San Rafael Student Home</b> (off campus) <b>\$345</b> (per week) Double occupancy	<b>Airport Pickup Fee</b> (Optional) <b>\$210</b> (One Way) SFO - San Francisco International Airport
--	--	---

### ELS ST. PAUL

<b>Homestay</b> <b>\$370</b> (per week) 14 meals per week (breakfast and dinner)	<b>St. Paul Student Residence</b> (off campus) <b>\$295</b> (per week) Double occupancy	<b>Airport Pickup Fee</b> (Optional) <b>\$230</b> (One Way) MSP - Minneapolis - St. Paul International Airport
--	---	--

### ELS ST. PETERSBURG

<b>Homestay</b> <b>\$400</b> (per week) 14 meals per week (breakfast and dinner)	<b>EC Campus Residences</b> (on campus) <b>\$625</b> (per week) Double occupancy 19 meals per week (full board on weekdays and half board on weekends) Minimum 4-week booking, only available on session start dates. Students must be fully vaccinated against COVID-19	<b>Airport Pickup Fee</b> (Optional) <b>\$195</b> (One Way) TPA - Tampa International Airport
--	---	---

# 2025 SESSION START DATES

While all programs run in 4-week sessions, students can start on any Monday year-round (Tuesday if Monday is a public holiday). For the best experience we encourage students to start at the beginning of a session where possible and not to start on week four of the session.

## 2025 SESSION START DATES & HOLIDAYS

JANUARY						
S	M	T	W	T	F	S
29	30	31	1	2	3	4
5	6	7	8	9	10	11
12	13	14	15	16	17	18
19	20	21	22	23	24	25
26	27	28	29	30	31	

FEBRUARY						
S	M	T	W	T	F	S
						1
2	3	4	5	6	7	8
9	10	11	12	13	14	15
16	17	18	19	20	21	22
23	24	25	26	27	28	

MARCH						
S	M	T	W	T	F	S
						1
2	3	4	5	6	7	8
9	10	11	12	13	14	15
16	17	18	19	20	21	22
23	24	25	26	27	28	29
30	31					

APRIL						
S	M	T	W	T	F	S
		1	2	3	4	5
6	7	8	9	10	11	12
13	14	15	16	17	18	19
20	21	22	23	24	25	26
27	28	29	30			

MAY						
S	M	T	W	T	F	S
				1	2	3
4	5	6	7	8	9	10
11	12	13	14	15	16	17
18	19	20	21	22	23	24
25	26	27	28	29	30	31

JUNE						
S	M	T	W	T	F	S
1	2	3	4	5	6	7
8	9	10	11	12	13	14
15	16	17	18	19	20	21
22	23	24	25	26	27	28
29	30					

JULY						
S	M	T	W	T	F	S
		1	2	3	4	5
6	7	8	9	10	11	12
13	14	15	16	17	18	19
20	21	22	23	24	25	26
27	28	29	30	31		

AUGUST						
S	M	T	W	T	F	S
					1	2
3	4	5	6	7	8	9
10	11	12	13	14	15	16
17	18	19	20	21	22	23
24	25	26	27	28	29	30
31						

SEPTEMBER						
S	M	T	W	T	F	S
	1	2	3	4	5	6
7	8	9	10	11	12	13
14	15	16	17	18	19	20
21	22	23	24	25	26	27
28	29	30				

OCTOBER						
S	M	T	W	T	F	S
			1	2	3	4
5	6	7	8	9	10	11
12	13	14	15	16	17	18
19	20	21	22	23	24	25
26	27	28	29	30	31	

NOVEMBER						
S	M	T	W	T	F	S
						1
2	3	4	5	6	7	8
9	10	11	12	13	14	15
16	17	18	19	20	21	22
23	24	25	26	27	28	29
30						

DECEMBER						
S	M	T	W	T	F	S
	1	2	3	4	5	6
7	8	9	10	11	12	13
14	15	16	17	18	19	20
21	22	23	24	25	26	27
28	29	30	31			

### A SCHEDULE START DATES

Schedule A Centers include:

Cincinnati, OH

Cleveland, OH

Houston, TX

Melbourne, FL

Nashville, TN

Philadelphia, PA

St. Petersburg, FL

### B SCHEDULE START DATES\*

Schedule B Centers include:

Chicago, IL

Los Angeles County, CA

San Francisco, North Bay, CA

St. Paul, MN

\*The Schedule B session starting on August 18th will be a compressed 3-week session. Starting on September 8th, 2025, Schedule B session start dates will align with Schedule A start dates.

### 2025 HOLIDAYS

New Year's Day

January 1

Martin Luther King Day

January 20

President's Day

February 17

Good Friday

April 18

Memorial Day

May 26

Juneteenth

June 19

Independence Day

July 4

Labour Day

September 1

Thanksgiving

November 27 & 28

Christmas

December 24 & 25

# 2026 SESSION START DATES

While all programs run in 4-week sessions, students can start on any Monday year-round (Tuesday if Monday is a public holiday). For the best experience we encourage students to start at the beginning of a session where possible and not to start on week four of the session.

## 2026 SESSION START DATES & HOLIDAYS

JANUARY						
S	M	T	W	T	F	S
8	29	30	31	1	2	3
4	5	6	7	8	9	10
11	12	13	14	15	16	17
18	19	20	21	22	23	24
25	26	27	28	29	30	31

FEBRUARY						
S	M	T	W	T	F	S
1	2	3	4	5	6	7
8	9	10	11	12	13	14
15	16	17	18	19	20	21
22	23	24	25	26	27	28

MARCH						
S	M	T	W	T	F	S
1	2	3	4	5	6	7
8	9	10	11	12	13	14
15	16	17	18	19	20	21
22	23	24	25	26	27	28
29	30	31				

APRIL						
S	M	T	W	T	F	S
			1	2	3	4
5	6	7	8	9	10	11
12	13	14	15	16	17	18
19	20	21	22	23	24	25
26	27	28	29	30		

MAY						
S	M	T	W	T	F	S
					1	2
3	4	5	6	7	8	9
10	11	12	13	14	15	16
17	18	19	20	21	22	23
24	25	26	27	28	29	30
31						

JUNE						
S	M	T	W	T	F	S
	1	2	3	4	5	6
7	8	9	10	11	12	13
14	15	16	17	18	19	20
21	22	23	24	25	26	27
28	29	30				

JULY						
S	M	T	W	T	F	S
			1	2	3	4
5	6	7	8	9	10	11
12	13	14	15	16	17	18
19	20	21	22	23	24	25
26	27	28	29	30	31	

AUGUST						
S	M	T	W	T	F	S
						1
2	3	4	5	6	7	8
9	10	11	12	13	14	15
16	17	18	19	20	21	22
23	24	25	26	27	28	29
30	31					

SEPTEMBER						
S	M	T	W	T	F	S
		1	2	3	4	5
6	7	8	9	10	11	12
13	14	15	16	17	18	19
20	21	22	23	24	25	26
27	28	29	30			

OCTOBER						
S	M	T	W	T	F	S
				1	2	3
4	5	6	7	8	9	10
11	12	13	14	15	16	17
18	19	20	21	22	23	24
25	26	27	28	29	30	31

NOVEMBER						
S	M	T	W	T	F	S
1	2	3	4	5	6	7
8	9	10	11	12	13	14
15	16	17	18	19	20	21
22	23	24	25	26	27	28
29	30					

DECEMBER						
S	M	T	W	T	F	S
		1	2	3	4	5
6	7	8	9	10	11	12
13	14	15	16	17	18	19
20	21	22	23	24	25	26
27	28	29	30	31		

### SESSION START DATES

All ELS Centers share the same session start dates in 2026, as indicated in the calendar in blue.

### 2026 HOLIDAYS

New Year's Day	January 1
Martin Luther King Day	January 19
President's Day	February 16
Good Friday	April 3
Memorial Day	May 25
Juneteenth	June 19
Independence Day	July 6 (observed)
Labour Day	September 7
Thanksgiving	November 26 & 27
Christmas	December 24 & 25

# ELS AGE REQUIREMENTS

ELS host institutions and/or accommodations may have minimum, and/or maximum age requirements. See below for your specific center.

## AGE RANGES AND MINIMUM AGE REQUIREMENTS

ELS / UNIVERSITY CAMPUS	HOMESTAY	RESIDENCE
ELS CHICAGO		
16+	18+*	18+
ELS CINCINNATI		
16+	18+*	18+
ELS CLEVELAND		
18+		18+
ELS HOUSTON		
16+	18+	18-35
ELS LOS ANGELES COUNTY		
16+	16+	17-25
ELS MELBOURNE		
14+	16+	18-25
ELS NASHVILLE		
17+		18+
ELS PHILADELPHIA		
17+		17+
ELS SAN FRANCISCO, NORTH BAY		
14+	18-30	18+
ELS ST. PAUL		
16+	16+	18+
ELS ST. PETERSBURG		
14+	16+	18-25

\*Students aged 16 and 17 may be accepted in homestay at these locations upon approval by the Center Director, and depending on availability.



# PAYMENT PLAN

Students may take advantage of our payment plan, which allows them to pay their tuition in installments over the course of their studies. Full payment plan rules and information are available below.

## PAYMENT PLAN GENERAL RULES

- Available for ELS bookings with a minimum of **16 weeks duration** (bookings of less than 16 week duration will need to pay the program in full prior to the start date).
- A Tuition Deposit might be required to receive the Letter of Acceptance (LOA) and I-20 at the time of enrollment as part of the first installment.
- An installment fee of \$100 will apply.
- All add-ons (Insurance, Accommodation, APU) must be paid in the first installment.

## PAYMENT PLAN INSTALLMENT INCLUSIONS

- **First Payment Includes:** full application fee, full installment plan fee, full material and technology fee, portion of total tuition fees (plus other fees in full that are unrelated to classes: homestay, insurance, etc).
- **Subsequent Payments Include:** remaining tuition fees divided by the remaining number of installments.

## PAYMENT DUE DATES

- The first installment payment is due 2 weeks prior to the program start date.
- The number of installment payments will depend on the total duration of study (length of the program).
- Subsequent installments are due every 8 weeks.
- A tailored payment plan, including specific due dates, will be provided to all students (or their agents) who choose our Payment Plan option.

# TERMS & CONDITIONS

## HOUSING PRICING

Prices subject to change.

Housing reservations are subject to availability.

If a student submits notification of visa approval to ELS fewer than 7 working days prior to arrival, ELS reserves the right to offer alternative housing, which may incur additional charges.

If a student defers the arrival day due to delayed visa processing, ELS cannot guarantee the originally booked housing, and any additional cost that may be incurred in arranging alternative housing for the student will be passed on to the student.

ELS programs are offered in 4-week sessions but students may start any week. As such, prices are listed by week. All ELS homestays are single occupancy.

## HOUSING PAYMENT

Full payment arrangements of a Student Residence Booking is required twenty-eight (28) days prior to Check-in.

Full payment arrangements of a Homestay Booking is required fourteen (14) days prior to Check-in.

Failure to provide proof of payment by the stipulated dates may result in a Room Release.

In the event that a student needs to change their originally scheduled Check-in and/or Check-out dates for any reason, the Date Change policy applies.

## HOUSING CANCELLATION

We understand that circumstances may arise where a student needs to cancel their Booking. The following cancellation provisions will determine the applicable timelines and charges that will apply to a cancelled Booking, which balance the need for the flexibility for the Student with the commitments that ELS makes with Student Residence providers and Homestay families.

### CANCELLATION BEFORE CHECK-IN (STUDENT RESIDENCE)

#### **At least 28 days' notice of cancellation request**

If a student wishes to cancel a Student Residence Booking and they give us at least twenty-eight (28) days' notice before their Check-in date, they are entitled to a full refund of the paid accommodation charges.

#### **Less than 28 days' notice of cancellation request**

If a student wishes to cancel a Student Residence Booking and they give us less than twenty-eight (28) days' notice before their Check-in date, a housing cancellation fee equal to up to four (4) weeks' of accommodation fees will apply.

### CANCELLATION BEFORE CHECK-IN (HOMESTAY)

#### **At least 14 days' notice of cancellation request**

If a student wishes to cancel a Homestay Booking and they give us at least fourteen (14) days' notice before their Check-in date, they are entitled to a full refund of the accommodation charges.

#### **Less than 14 days notice of cancellation request**

If a student wishes to cancel a Homestay Booking and they give us less than fourteen days (14) days' notice before their Check-in date, a housing cancellation fee equal to up to two (2) weeks' of accommodation fees will apply.

### CANCELLATION AFTER CHECK-IN (STUDENT RESIDENCE & HOMESTAY)

If a student wishes to cancel or shorten a Student Residence or Homestay Booking after Check-in:

- (i) Bookings up to four (4) weeks and six (6) days (total 34 days), no refund;
- (ii) Bookings more than 5 weeks (total 35 days), with four (4) weeks Written Notice, they will be entitled to a refund of outstanding amount.

## MEALS

Students staying in ELS homestays receive 14 meals a week (breakfast and dinner every day of the week). ELS off-campus residences do not include meal plans. Any university on-campus residences that include meal plans are specifically noted on the application and in Knowledge Hub.

# TERMS & CONDITIONS

## ELS I-20 ELIGIBLE PROGRAMS

ELS Intensive and Semi-Intensive study programs are considered full-time study programs and are eligible for an I-20. The I-20 is required to apply for your F-1 student visa. Please note that the American Explorer program is not eligible for an I-20.

## AIRPORT PICK-UP SERVICE

Airport pick-up fees include a maximum of 1 hour waiting time. In the event of delays exceeding 1 hour, students will be charged an additional fee at the school.

In order to secure airport pick-up, ELS must receive flight details, arrival times, and drop-off location at least 7 days prior to student's arrival. No refunds will be granted for airport pick-up if flight details are not received at least 7 days prior to arrival.

## CANCELLATION OF AIRPORT PICK-UP / DROP-OFF (AIRPORT TRANSFER)

If a student wished to cancel an Airport Pick-Up or Drop-Off request, they must give at least 48 hours written notice prior to Check-In.

If sufficient notice of the cancellation request is received, the student is entitled to 100% refund of the Airport Pick-Up / Drop-Off amount.

Failure to provide sufficient notice of the Airport Pick-Up / Drop-Off cancellation request will result in no refund.

## STUDENT HEALTH INSURANCE

All ELS students must have medical insurance coverage while in the U.S.A. If you cannot provide evidence of sufficient coverage, in English, you must purchase the ELS Student Health Plan. The Student Health Plan is offered to ELS students at a non-refundable fee of \$50 per week. You will receive additional information about the Student Health Plan when you arrive at the center.

## ELS UNIVERSITY ADMISSION SERVICES REFUND POLICY

Processing and Change Fees: If ELS does not accept your application or request, ELS will refund the processing or change fee. If ELS accepts the application, and you cancel the application, the processing fee will not be refunded, regardless of the application decision issued by the partner university or college, including denial.

Applications that remain incomplete for more than six months will be closed; a new application processing fee will be required to reopen the admission process.